



Piping Profile

Steelwork, Mechanical, Electrical,
Instrumentation and Piping

(S.M.E.I.P)

Engineering, Fabrication and Site Erection





CHANNEL CONSTRUCTION

NPC : PORT SHEPSTONE
Piping for Alternate Liquid Fuel



Upgrade of ClO_2 plant to Hydrogen Peroxide



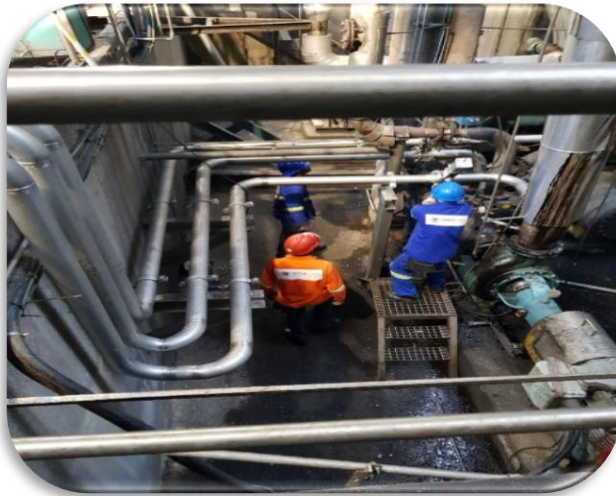
Upgrade of C3 Plant



Upgrade of Mondi Packaging



Installation of Mini Sorter with associated Piping



SAPPI - NGODWANA
Project Go Cell



Sulphur Plant Upgrade



We are approximately 30 kms away from the King Shaka Airport, Which provides easy access to all local and international flights.

Transportation is always available via our local distribution & transportation companies.

