

Channel Construction  
(Pty) Ltd



# Company Profile

Steelwork, Mechanical, Electrical,  
Instrumentation and Piping

Engineering, Fabrication and Site Erection







**Channel Construction** was founded over 20 years ago as a medium to heavy fabricator and erector of structural steel including the manufacturing of modular structures, pipe-racks, pipe-spools, fabricated tanks and site erected tanks (using the Jacking Method).

Located in the Durban Bayhead area, the workshop and fabrication facilities have over 25,000 m<sup>2</sup> of open and closed space which includes an along side load out quay dredged to 11 meters and a number of boat slipways and access to dry dock.



At **Channel Construction** we aim to deliver manufacturing and engineering projects within budget; on time to exacting standards and to maintain safety and quality standards.

**Channel Construction** has a CIDB grading of 8ME PE and 7SL PE. We are accredited with SABS ISO 9001:2015, as well as a Level 2 B-BBEE status. We are committed to Preferential Procurement Policies whereby we empower small and local businesses.

**Channel Construction** is 100% Black Owned.



Bucket Wheel



Orebin

# Mission



**Channel Construction** has a proven ability of ensuring cost effective and skilled manufacture of products to exacting standards. We manufacture in carbon steels, stainless steels and exotic materials and offer the following in our range of products:

- Structural Steelwork
- Tanks, Pressure Vessels, Heat Exchangers
- Hoppers, Ducting & Chutes
- Process Equipment
- Materials Handling Equipment and Conveyors
- Specialised Equipment and Components
- Maintenance & Repairs
- Site Erection



Rehabilitation of the Inner Caisson  
at the Dry Dock



Sappi Ngodwana : Structural Steelwork



Slimes Bolted Thickener

# Manufacturing Capabilities

The workshop area is serviced by 4 overhead cranes ranging in capacity of 5 tons to 15 tons under hook. With a total lifting capacity of 30 tons, we have a full range of equipment to carry out medium to heavy engineering fabrication including, but not limited to:

- Welding Machines
- Plate Rolls- roll up to 100 mm thick plate
- Cropper/Shear
- Guillotine – 13m/m thick plate over 3.2m
- Press brakes 300 ton over 4.2m
- Full Blasting and Painting Facilities
- Skyjack
- Bend Press
- Radial Arm Drill
- Mobile Compressor
- Bandsaw Pipe Cutting Machine



Skyjack



Radial Arm Drill



Guillotine

# Workshop Facilities



**Channel Construction** has the full capability to perform site erection projects, offering the following equipment:

- 2 X 60 ton Tadano All Terrain Cranes
- 250KVA Diesel Generators
- Scaffolding
- 50 X 450AMP Welding Machines
- Tank Jacking System
- Forklifts
- Site Vehicles
- Small Tools



Transnet – Diversion Tank



Built-In Modular Structure for Crystallizers for Nickel Mine



Crane Repair

# Site Erection Equipment



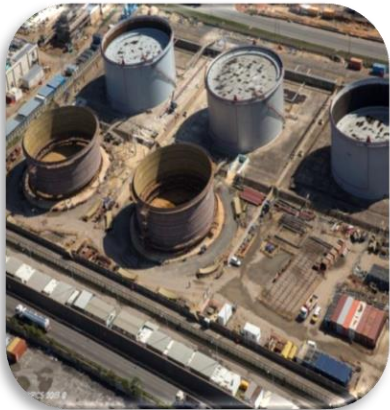
# Project Experience



Transnet Diversion Tanks



Barberton Tailings Plant



Transnet - Fuel Storage Tanks



Built-In Modular Structures for Crystallizers for Nickel Mine





# Project Experience



Modular Structure  
for Wax Plant



Conveyors for Coal Wash Plant



Stainless Steel  
Drop Separator  
for Boiler



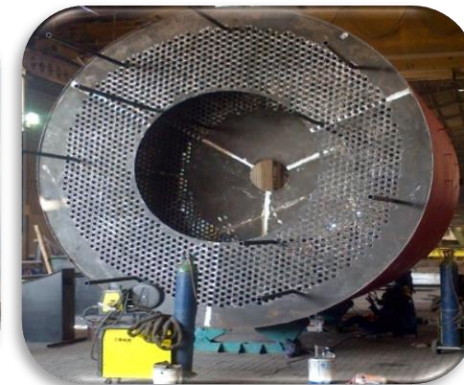
Flush Tanks for  
Tank Farm



Elution Tower  
for Mining Plant



Diversion Tanks



Cold Exchangers for Acid Plant



# Project Experience



Tanks for Sulphuric Acid Plant in the Democratic Republic of Congo



Slimes Bolted Thickener



Kusile - Ducting



# Project Experience

Mondi Flexiton - Upgrade of Mondi Packaging

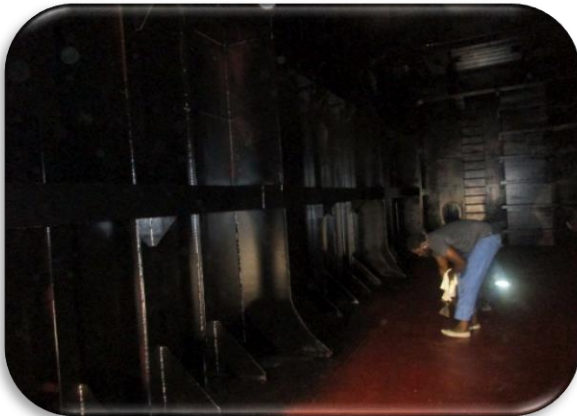


NPC Port Shepstone - Piping for Alternate Liquid Fuel

Sappi Umkomaas - Upgrade of C3 Plant



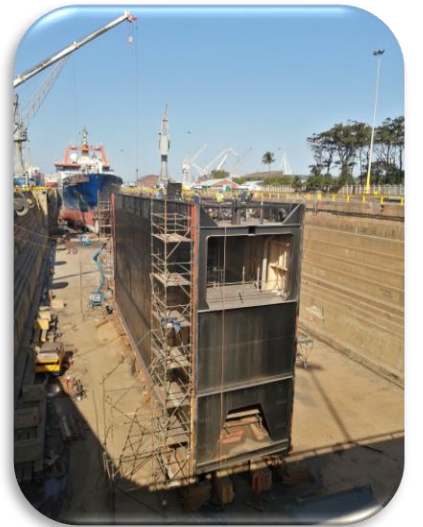
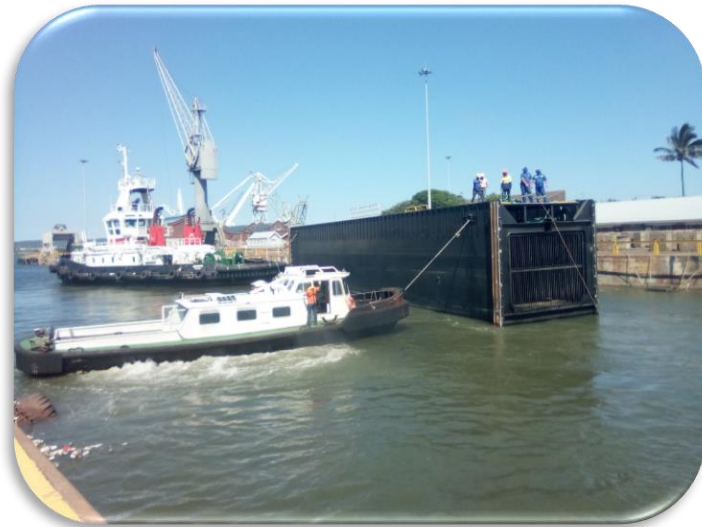
# Project Experience



Rehabilitation of Outer Caisson at Dry Dock



# Project Experience



Refurbishment of the Inner Caisson at Dry Dock



## Accreditations

iiw

### INTERNATIONAL

### INSTITUTE OF WELDING

iiw

Having satisfied the requirements of the  
IIW Manufacturer Certification Scheme  
according to ISO 3834

Company: Channel Construction

The Unit: Fabrication Workshop

Located in: 3 Clydebank Road, Bayhead, Durban, Kwa-Zulu Natal  
is certified in accordance with



#### SANS ISO 3834 Part 2

For the product(s): Pressure Vessels, Pressure Equipment, Pressure Piping,  
Tank/Containers and General Structural Steel

with the scope of work stated in the attached Schedule

Certificate number and revision status: ZA-180 – Rev. 0

First issue date: 2018/03/08

Current issue date: 2018/03/08

Date of expiry: 2021/03/07

ANBCC Governing Board Representative

Scheme Manager  
Herman Potgieter

SAIW Certification  
52 Western Boulevard  
City West  
Johannesburg  
South Africa

SAIW  
Certification

iiw

This Certificate is subject to the rules established by IIW  
for the certification of Companies

iiw



Channel Construction  
(Pty) Ltd



**SFB5**

# Certificate of Registration

This is to certify that the Quality Management System of

**CHANNEL CONSTRUCTION (PTY) LTD**  
**BAYHEAD, DURBAN**

has been allowed and found to satisfy the requirements of

**ISO 9001:2015**

## QUALITY MANAGEMENT SYSTEMS - REQUIREMENTS

in respect of

## THE FABRICATION OF STEEL PRODUCTS

NOT APPLICABLE CLAIMS:

### 3.3 DESIGN AND DEVELOPMENT OF PRODUCTS AND SERVICES

- The certificate providing the following shall have 25 integer part provided:
  - a speed without reference;
  - a heading for the absolute navigation mode;
  - a heading to the destination or position reference point;
  - a real bearing to position correlation with earth's own measurement;
  - Values the environmental Data's Components used in the estimate of the real certificate and the certificate shall be fixed and
  - the certificate may be substituted by referring to the output of "Certified Channel" for the Data's Components available from 10/10/2018.

LS 3809

04 July 2018

29 November 2021

29 November 2005

Chief Executive Officer

Enchiridion





# Accreditations



**BROAD BASED BLACK ECONOMIC EMPOWERMENT CERTIFICATE**

## Channel Construction (Pty) Ltd

Address: 3 Clyde Bank Road, Bayhead, Durban, 4320

Registration No. 2004/009100/07 | VAT Registration No. 4840214920

BEE Contributor Level: (2007 B-BBEE Construction Sector Code) Gazette No. 41287 - Contractor	LEVEL 2	
BEE Procurement Recognition Level:	125%	
Enterprise Category:	Qualifying Small Enterprise Scorecard	
Reference Number:	IC 7267	Rev 0

ELEMENT	TARGET	ACTUAL SCORE
Skills Development	24	N/A
Preferential Procurement & Supplier Development	29	N/A

Measurement Period	December 2018
Modified Flow Through Principle applied:	NO
≥ 51% Black ownership:	YES
Black Ownership %	100%
≥ 35% Black women ownership:	NO
Black women ownership %	5%
Designated Group supplier:	NO
% Designated Group supplier:	5%
Discount Principle Applied	YES
Empowering supplier:	YES

**Certificate Date:** 31 October 2019

**Expiry Date:** 01 November 2020

**Authorised By:**

Neeta Devnarain

Xcelerate Verification Agency (Pty) Ltd Reg 2016 /294304 /07  
The Liberty Life Building, 21 Aurora Drive, Umhlanga Ridge  
PO Box 933, Hyper by the Sea, 4053 | Tel 0861 505 555 Fax 086 401 7118  
info@xcelbee.co.za | www.xcelbee.co.za



DRIVING BUSINESS GROWTH THROUGH EXCELLENCE



Channel Construction  
(Pty) Ltd

[Home](#)

[Print](#)

#### Contractor Detail

#### Contractor Detail

CRS Number:	214772	Status:	Active
Contractor Name:	CHANNEL CONSTRUCTION (PTY) LTD	Type of Enterprise:	Private Company
Trading Name:	CHANNEL CONSTRUCTION (PTY) LTD	Expiry Date:	2022/09/26

#### Contractor Grades

Grade: 8ME PE, Update Date:

Grade: 7SL PE, Update Date:

[Back](#)

Copyright © cidb 2011. All rights reserved

[Website technical enquires contact](#)



Channel Construction  
(Pty) Ltd

Accreditations



# Contact Us

## **DURBAN, SOUTH AFRICA**

### **Head office / Workshop**

Address : 3 Clydebank Road, Bayhead, Maydon Wharf

Tel: +27 31 205 7401 Fax: +27 31 205 7402

Email: [enquiries@channelgroup.co.za](mailto:enquiries@channelgroup.co.za)

Web: [www.channelgroup.co.za](http://www.channelgroup.co.za)

## **ZAMBIA:**

118 Insurance House, Town Centre

P.O.Box 71231

Tel: +260 212 612 324 (Office)

## **MOÇAMBIQUE:**

Registration : 20130000035372

Av. Martires de Inhaminga, Gate N° 4, Maputo port,  
Workshop A2, Maputo, Mocambique

