



Channel Construction  
(Pty) Ltd

# PIPING PORTFOLIO

2020



## CHANNEL CONSTRUCTION

Channel Construction is strategically positioned on the Durban harbour, Bayhead area with quay space, the workshop and fabrication facilities have over 25,000 m<sup>2</sup> of open and closed space which includes an along side load out quay dredged to 11 meters and a number of boat slipways and access to dry dock.



**NPC : PORT SHEPSTONE**  
Piping for Alternate Liquid Fuel



Upgrade of  $\text{ClO}_2$  plant to Hydrogen Peroxide





Upgrade of C3 Plant



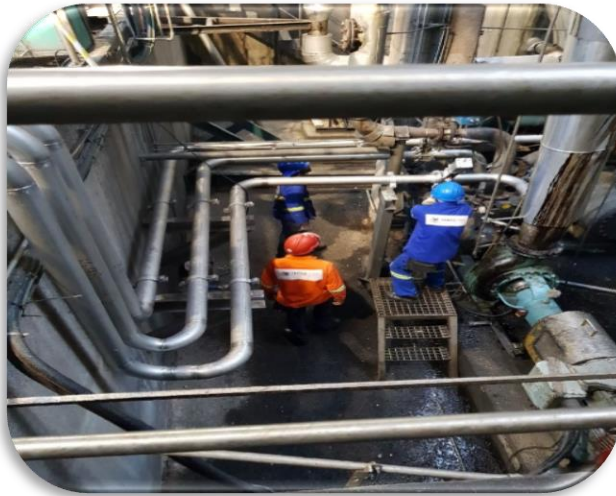


Upgrade of Mondi Packaging





Installation of Mini Sorter with associated Piping



**SAPPI - NGODWANA**  
Project Go Cell



## Sulphur Plant Upgrade





We are approximately 40 kms away from the King Shaka Airport, Which provides easy access to all local and international flights



**Channel Construction**  
(Pty) Ltd